



Rabbit anti NFkB p65 Polyclonal Antibody

Alternative Name(s): nuclear factor kappa B subunit p65; NFkB

Order Information

- **Description:** NFkB p65
- **Catalogue:** 500-2754
- **Lot:** See label
- **Size:** 100ug/200ul
- **Host:** Rabbit
- **Clone:** nan
- **Application:** IHC(P), WB
- **Reactivity:** Hu, Rt

ANTIGEN PREPARATION

A synthetic peptide derived from internal domain of human NFkB p65

BACKGROUND

NF- κ B (nuclear factor kappa-light-chain-enhancer of activated B cells) is a protein complex that controls the transcription of DNA. NF- κ B is important in regulating cellular responses because it belongs to the category of "rapid-acting" primary transcription factors. NF kappa B is a heterodimer consisting of a 50kDa DNA binding subunit and a 65kDa transactivating subunit. In unstimulated cells, the NF- κ B dimers are sequestered in the cytoplasm by a family of inhibitors, called I κ Bs (Inhibitor of κ B). Activation of the NF- κ B is initiated by the signal-induced degradation of I κ B proteins. Subsequent to cell stimulation, I κ B undergoes phosphorylation, ubiquitination and degradation by a proteasome-dependent pathway, allowing nuclear translocation of the active dimeric NFkB transcription factor. NF- κ B complex enters the nucleus where it can 'turn on' the expression of specific genes that have DNA-binding sites for NF- κ B nearby. The activation of these genes by NF- κ B then leads to the given physiological response, for example, an inflammatory or immune response, a cell survival response, or cellular proliferation.

PURIFICATION

The Rabbit IgG is purified by Epitope Affinity Purification

FORMULATION

This affinity purified antibody is supplied in sterile Phosphatebuffered saline (pH7.2) containing antibody stabilizer

SPECIFICITY

This antibody reacts with human, rat NFkB p65. The other species are not tested.

STORAGE

The antibodies are stable for 24 months from date of receipt when stored at -20oC to -70oC. The antibodies can be stored at 2oC-8oC for three month without detectable loss of activity. Avoid repeated freezing-thawing cycles.

APPLICATIONS/SUGGESTED WORKING DILUTIONS*

- Western Blot: 0.1-1 μ g/ml
- ELISA: 0.01-0.1 μ g/ml
- Immunoprecipitation: 2-5 μ g/ml
- IHC: 2-10 μ g/ml
- Flow cytometry: Not tested
- Molecular Weight: 65.0
- Positive Control: Kidney Tissue
- Cellular Location: Cell Membrane

*Optimal dilutions should be determined by researchers for the specific applications.

FOR RESEARCH USE ONLY.

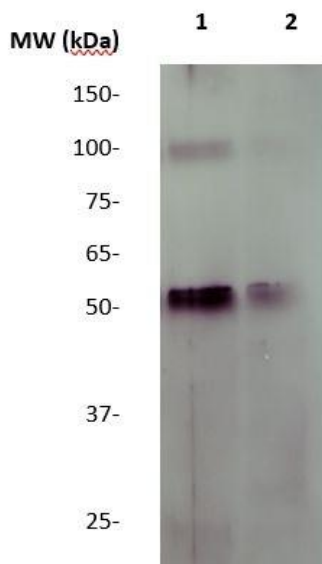
AbboMax, Inc 2528 Qume Drive, Suite 8, San Jose, California 95131, USA
1 408-573-1898 (Tel). 1 408-573-1858 (Fax). www.abbomax.com info@abbomax.com



FOR RESEARCH USE ONLY.

AbboMax, Inc 2528 Qume Drive, Suite 8, San Jose, California 95131, USA
1 408-573-1898 (Tel). 1 408-573-1858 (Fax). www.abbomax.com info@abbomax.com

DATA ATTACHMENTS



Western Blot: The whole lysate derived from MCF7 (20 ug/lane) immunoblotted by Rabbit anti – NFkBp65 (Cat# 500-2754) at 1:500. Observed a major immunoreactive band at molecular weight ~65kDa.

REFERENCES

FOR RESEARCH USE ONLY.

AbboMax, Inc 2528 Qume Drive, Suite 8, San Jose, California 95131, USA
1 408-573-1898 (Tel). 1 408-573-1858 (Fax). www.abbomax.com info@abbomax.com